

**Woodland Park Zoo Babies**  
November 2012 - August 2013



The photos in this timeline depict animals born at Seattle's Woodland Park Zoo. Unless otherwise noted, photo credit belongs to Ryan Hawk and Woodland Park Zoo.

**Tiny Egyptian tortoises hatch**  
November 1, 2012



**Quadruplet lion cubs born**  
November 8, 2012



**Twin sloth bear cubs born**  
December 18, 2012



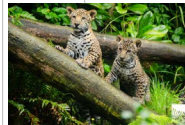
Photo credit:  
Dennis Dow/Woodland Park Zoo

**Rare tree kangaroo joey**  
February 5, 2013



This joey actually was born in June 2012 but first emerged from his mother's pouch in February 2013.

**Triplet jaguar cubs born**  
March 22, 2013



**Eight Humboldt penguin chicks hatched**  
Several days in April 2013



**Snow leopard cubs born**  
May 2, 2013



Woodland Park Zoo has a long history of caring for snow leopards and conserving them in the wild. The zoo's first snow leopards arrived in 1972 from the USSR. Under the Snow Leopard Species Survival Plan, more than two dozen cubs have been born at the zoo and sent to zoos worldwide to help diversify the genetic pool of the managed population of this endangered cat.

**Red-crowned crane hatched**  
May 13, 2013



Photo credit:  
Dennis Dow/Woodland Park Zoo

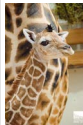
**Tawny frogmouth chick hatched**  
April 29, 2013



**Quadruplet Asian small-clawed otter pups born**  
June 11, 2013



**6-foot-tall giraffe calf born**  
August 6, 2013



December 1, 2012

January 1, 2013

February 1, 2013

March 1, 2013

April 1, 2013

May 1, 2013

June 1, 2013

July 1, 2013

August 1, 2013